

Elcometer AGV

Automatic  
General Valve

Elcometer AGV Automatic General Valve ensures precision abrasive control and fail-safe shut down of both the blast stream and media flow.

Media flow indicator and rubber liner wear indicator

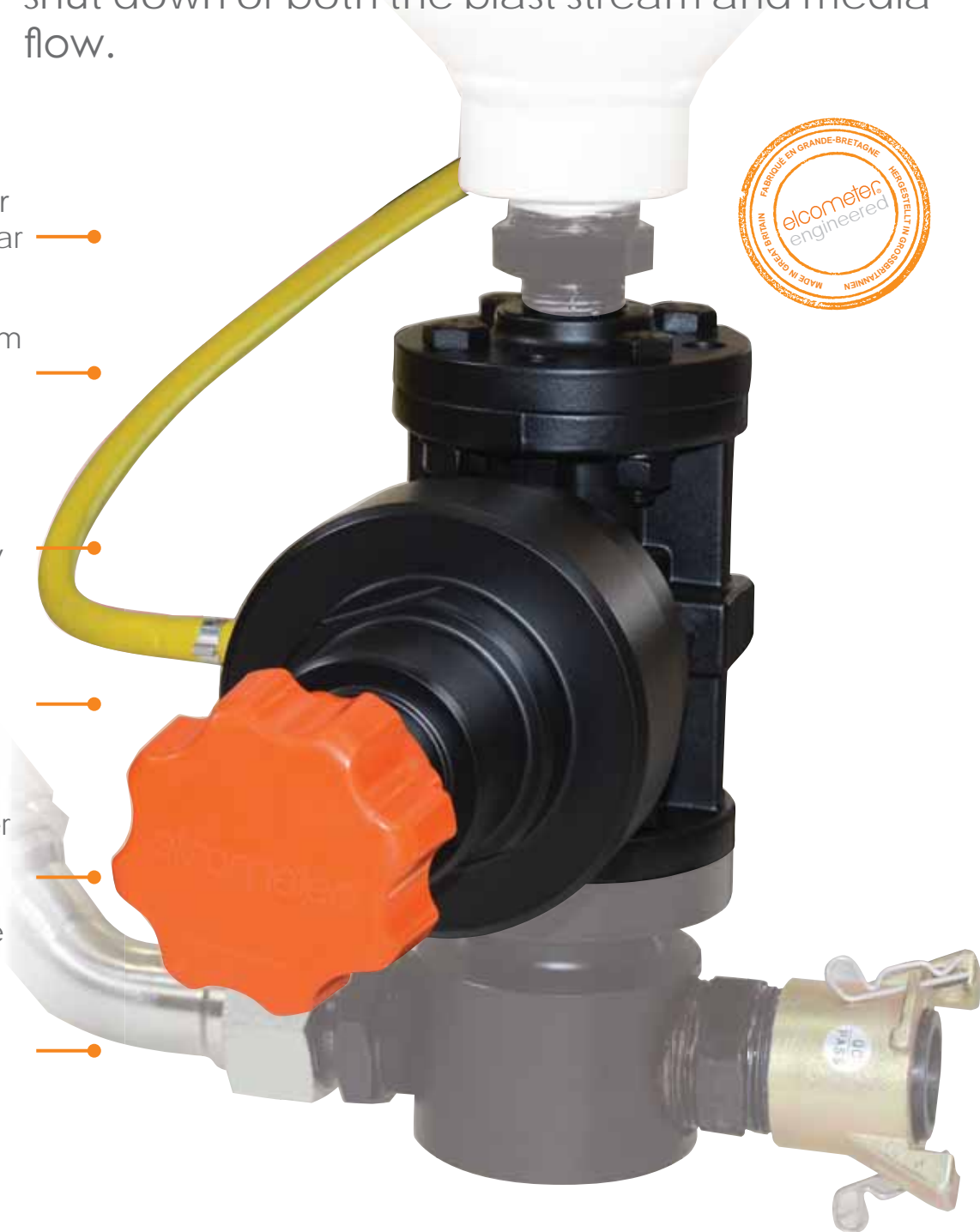
Tested to a maximum working pressure of 15bar (217 psi)

Precision abrasive control to ensure maximum efficiency even whilst blasting

Safely adjust media flow when in use to save time

ElcoTOUGH™ rubber liner can be quickly replaced without disconnecting valve

100% abrasive shut off - reducing wastage



Replace the elcoTOUGH™ rubber valve liner with just 2 bolts

Ideal for metering fine, heavy or aggressive abrasive materials, such as shot, grit & aluminium oxide, the pinch valve style design prevents the valve body from coming into contact with the abrasive stream as it is protected by the long life **elcoTOUGH™** rubber valve liner, which can be quickly replaced when worn.



### Safe & Efficient

The Elcometer Automatic General Valve has a built in fail-safe feature that shuts off both the blast stream and media flow at the handle quickly and safely - reducing wastage.



### Easy to Use

With a built in media flow indicator the Elcometer Automatic Valve allow the operator to adjust the media flow even during blasting, ensuring precise abrasive metering for an even, regulated flow.



### Fast to Service

To replace the hardwearing **elcoTOUGH™** rubber valve liner, the Elcometer Automatic General Valve does not have to be removed from the blast machine and can be quickly replaced without training.

### Flexible

The Elcometer AGV Automatic General Valves fit most abrasive blast machines on the market.

Elcometer Automatic General Valve		Elcometer AGV
Part Numbers		
Part Number	Description	
AGV-B	Elcometer Automatic General Valve - complete with <b>elcoTOUGH™</b> Rubber Valve Liner	

**Mixer T**

The Elcometer Mixer T is made from ultra-hard wearing machined steel so that they last longer, and when it starts to wear out, simply rotate it by 180° to double its service life.



Connects to the base of GV & AGV abrasive media valves, allowing abrasive media to mix with air from the blast hose

Machined from a solid piece of hard wearing steel

Internal shoulder prevents grit from entering thread, minimising wear & maximising lifetime

**Part Numbers**

#	Part Number	Description
1	<b>MT28553</b>	1 ½" (38mm) Mixer T for Elcometer GV and AGV Abrasive Media Valves

**Spare Parts**

#	Part Number	Description
2	<b>MT29710</b>	1½" (38mm) Male/Male Adaptor - 60° CONE
3	<b>MT29014</b>	1½" (38mm) BSP Forged Hex Nipple 3000lb
4	<b>MT30002</b>	Elcometer ABM 1 ½" (38mm) BSP Pot Coupling

elcoTOUGH™

Elcometer elcoTOUGH™ Rubber Valve Liner

The elcoTOUGH™ liners last more than 3 times longer and can be quickly replaced without removing the valve from the machine.

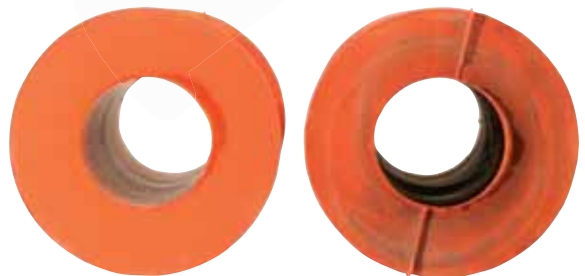


Made from tough, abrasion resistant natural rubber

Ideal for metering all types of abrasive materials

The ElcoTOUGH™ rubber liner can be quickly replaced without disconnecting the valve

elcoTOUGH™ Long Life Liner



New elcoTOUGH™ Valve Liner

elcoTOUGH™ Valve Liner after 1665 Hours with Copper Slag at 8bar (116psi)

Part Numbers

Part Number Description

Standard Valve Liner

**GV-LINER1** 1" (25mm) GV & AGV ElcoTOUGH™ Rubber Valve Liner (x1)

**GV-LINER5** 1" (25mm) GV & AGV ElcoTOUGH™ Rubber Valve Liner (x5)

**GV-LINER20** 1" (25mm) GV & AGV ElcoTOUGH™ Rubber Valve Liner (x20)

Mini Valve Liner

**MGV-LINER1** ½" (13mm) MGV ElcoTOUGH™ Rubber Valve Liner (x1)

**MGV-LINER5** ½" (13mm) MGV ElcoTOUGH™ Rubber Valve Liner (x5)

**MGV-LINER20** ½" (13mm) MGV ElcoTOUGH™ Rubber Valve Liner (x20)

Mini Flanged T

The Elcometer Mini Flanged T connects to the base of the Elcometer Mini Grit Valve (MGV) used on the Elcometer 1020, allowing abrasive media to mix with the air from the blast hose.



Part Numbers	
Part Number	Description
MT29246	½" (13mm) Flange & Equal T Assembly for use with Elcometer MGV Mini General Valve

8 Hole Pot Flange

The Elcometer 8 Hole Pot Flange has 8 holes to ensure accurate orientation of the media valve without having to over tighten the flange into the pot coupling.



Part Numbers	
Part Number	Description
MT28536	1¼" to ½" (32mm to 13mm) Reducing Nipple Flange Assembly for Elcometer 1020 for use with MGV Abrasive Valve
MT28552	1¼" to 1" (32mm to 25mm) Reducing Nipple Flange Assembly for Elcometer Blast Machines using the GV or AGV Abrasive Valves
MT30021	1¼" to ½" (32mm to 13mm) Reducing Hex Nipple
MT30530	½" (13mm) Flange
MT30528	1¼" to 1" (32mm to 25mm) Reducing Hex Nipple
MT29553	1" (25mm) Flange



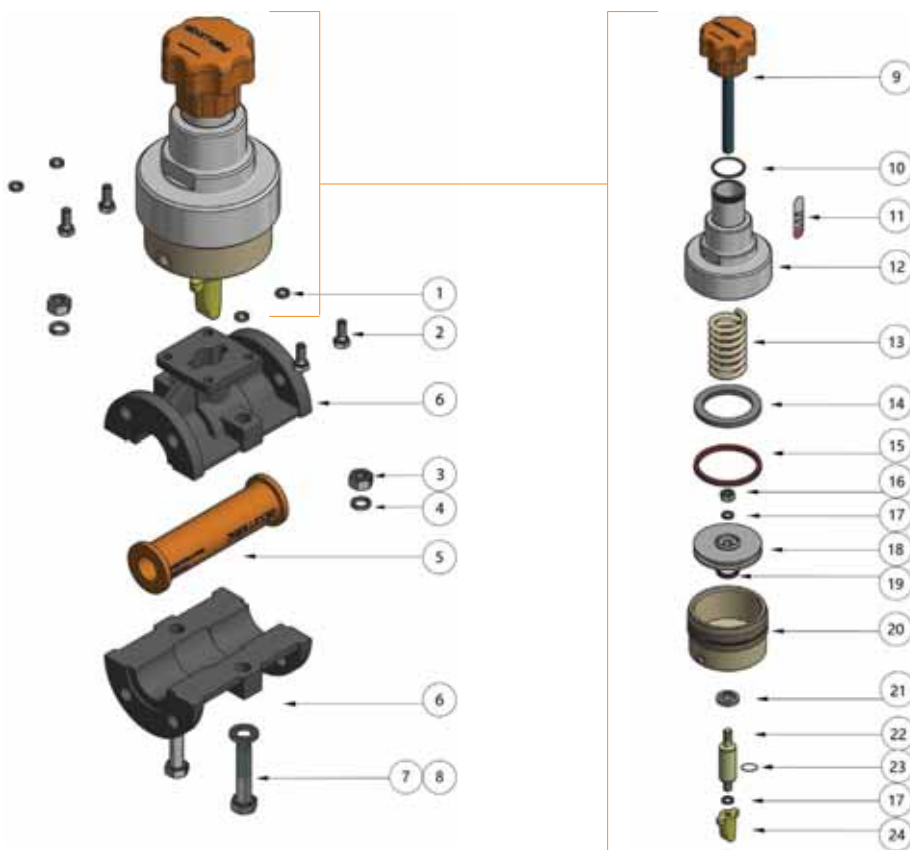
## Elcometer AGV

## Elcometer Automatic General Valve



Part Number Description

**AGV-B** Elcometer Automatic General Valve - BSP Thread



### Spare Parts

Item	Part Number	Description	Item	Part Number	Description
1	<b>KIT 1</b>	M8 Steel Spring Washer (x4)	13	<b>MT29996</b>	Spring 56mm OD x 110mm
2	<b>KIT 1</b>	M8 x 20mm BSP Hex Bolt Grade 4.6 (x4)	14	<b>KIT 4</b>	Actuator Stop Ring
3	<b>KIT 2</b>	M12 Zinc Plated Steel Nut (x2)	15	<b>KIT 4</b>	Piston Seal 101.6 OD 88.9 ID
4	<b>KIT 2</b>	M12 Steel Spring Washer (x2)	16	<b>KIT 3</b>	M12 Zinc Plated Steel Nut
5	<b>GV-LINER1</b>	Rubber Valve Liner	17	<b>KIT 3</b>	M12 Steel Spring Washer (x2)
6	<b>MT29993</b>	AGV Valve Housing Body	18	<b>MT29997</b>	Actuator Piston
7	<b>KIT 2</b>	M12 Zinc Plated Steel Washer (x2)	19	<b>KIT 4</b>	Piston Seal 35 OD 25 ID
8	<b>KIT 2</b>	M12 x 70 Zinc Plated Hex Bolt (x2)	20	<b>MT29998</b>	Actuator Cylinder
9	<b>MT29994</b>	AGV Valve Handwheel & Shaft	21	<b>KIT 4</b>	Rod Wiper Seal Ø25mm Shaft
10	<b>KIT 4</b>	O Ring 3mm Cord x 44.5 ID	22	<b>MT29999</b>	Plunger Shaft
11	<b>KIT 4</b>	Valve Indicator Label	23	<b>KIT 4</b>	O Ring BS4518 0116-24
12	<b>MT29995</b>	Actuator Spring Housing	24	<b>MT30001</b>	Valve Plunger

### Service Kits

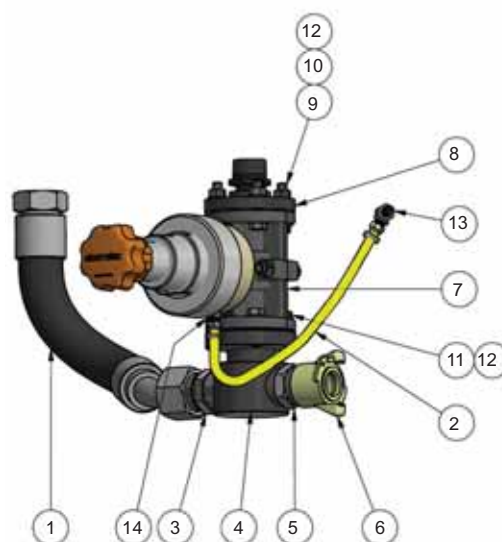
Part Number	Description
<b>MT30044</b>	AGV Service Kit 1 (contains items 1 & 2)
<b>MT30045</b>	AGV Service Kit 2 (contains items 3, 4, 7 & 8)
<b>MT30047</b>	AGV Service Kit 3 (contains items 16 & 17)
<b>MT29598</b>	AGV Service Kit 4 (contains items 10, 11, 14, 15, 19, 21 & 23)

## Elcometer Automatic General Valve Assembly

## Elcometer AGV

### Technical Specification

Operating Temperature	0° to 60°C
Max Working Pressure (WP)	15bar (217psi)



### Part Numbers

Part Number	Description
<b>MT30065-1</b>	Elcometer 1440 Full AGV Assembly complete with Pusher Line, Mixer T, AGV Automatic General Valve, Pot Flange, Pot Coupling & Airline Assembly
<b>MT30065-2</b>	Elcometer 1460 Full AGV Assembly complete with Pusher Line, Mixer T, AGV Automatic General Valve, Pot Flange, Pot Coupling & Airline Assembly
<b>MT30065-3</b>	Elcometer 20100 Full AGV Assembly complete with Pusher Line, Mixer T, AGV Automatic General Valve, Pot Flange, Pot Coupling & Airline Assembly
<b>MT30065-4</b>	Elcometer 24200 Full AGV Assembly complete with Pusher Line, Mixer T, AGV Automatic General Valve, Pot Flange, Pot Coupling & Airline Assembly
<b>MT30065-5</b>	Elcometer 24285 Full AGV Assembly complete with Pusher Line, Mixer T, AGV Automatic General Valve, Pot Flange, Pot Coupling & Airline Assembly

### Spare Parts

Item	Description	Part Numbers				
		Model 1440	Model 1460	Model 20100	Model 24200	Model 24285
1	1½" 15bar Pusher Line Assembly complete with Swaged Hose	<b>MT28609-1</b>	<b>MT28609-3</b>	<b>MT28609-5</b>	<b>MT28609-6</b>	<b>MT28609-6</b>
2	Elcometer Airline Assembly	<b>MT29580-2</b>	<b>MT29580-3</b>	<b>MT29580-4</b>	<b>MT29580-5</b>	<b>MT29580-6</b>
3	1½" Male/Male BSP Adaptor - 60° Cone			<b>MT29710</b>		
4	1½" Mixer T			<b>MT28553</b>		
5	1½" BSP Forged Hex Nipple 3000lb			<b>MT29014</b>		
6	1½" BSP Claw Coupling			<b>MT30002</b>		
7	AGV Main Assembly			<b>AGV-B</b>		
8	1¼" to 1" Reducing Nipple Flange Assembly			<b>MT28552</b>		
9	M12 x 50 Zinc Plated Hex Bolt (x4)			<b>KIT 5</b>		
10	M12 Zinc Plated Steel Nut (x4)			<b>KIT 5</b>		
11	M12 x 40 Zinc Plated Hex Bolt (x4)			<b>KIT 5</b>		
12	M12 Zinc Plated Steel Washer Grade A (x12)			<b>KIT 5</b>		
13	¼" BSP Male Female T Adaptor			<b>MT30089</b>		
14	¼" BSP 60° Cone X BSP Adaptor			<b>MT30086</b>		
	AGV Service Kit 5 (contains items 9, 10, 11 & 12)			<b>MT30048</b>		