

Elcometer AGV

Automatic
General Valve

Elcometer AGV Automatic General Valve ensures precision abrasive control and fail-safe shut down of both the blast stream and media flow.

Media flow indicator and rubber liner wear indicator

Ideal for use on all blast machines - up to 15bar (217psi)

Precision abrasive control to ensure maximum efficiency even whilst blasting

Safely adjust media flow when in use to save time

elcoTOUGH™ rubber liner can be quickly replaced without disconnecting valve

100% abrasive shut off - reducing wastage



Replace the elcoTOUGH™ rubber valve liner with just 2 bolts

Ideal for metering fine, heavy or aggressive abrasive materials, such as shot, grit & aluminium oxide, the pinch valve style design prevents the valve body from coming into contact with the abrasive stream as it is protected by the long life **elcoTOUGH™** rubber valve liner, which can be quickly replaced when worn.

Safe & Efficient

The Elcometer Automatic General Valve has a built-in, fail-safe feature that shuts off both the blast stream and media flow at the handle quickly and safely - reducing wastage.



Easy to Use

With a built-in media flow indicator the Elcometer Automatic General Valve allows the operator to adjust the media flow even during blasting, ensuring precise abrasive metering for an even, regulated flow.



Fast to Service

To replace the hardwearing **elcoTOUGH™** rubber valve liner, the Elcometer Automatic General Valve does not have to be removed from the blast machine, it can be quickly replaced without training.



Flexible

The Elcometer AGV Automatic General Valve fits most abrasive blast machines on the market.

Elcometer Automatic General Valve

Elcometer AGV

Part Numbers

Part Number	Description
AGV-N	Elcometer Automatic General Valve - complete with elcoTOUGH™ Rubber Valve Liner

Mixer T

The **Elcometer Mixer T** is made from ultra-hard wearing machined steel so that it lasts longer and, when it starts to wear out, simply rotate it by 180° to double its service life.



Connects to the base of GV & AGV abrasive media valves, allowing abrasive media to mix with air from the pusher line

Machined from a solid piece of hard wearing steel

Internal shoulder prevents grit from entering thread, minimising wear & maximising lifetime

Part Numbers

#	Part Number	Description
1	MT28553N	1½" (38mm) Mixer T for Elcometer GV and AGV Abrasive Media Valves

Spare Parts

#	Part Number	Description
2	MT29710N	1½" (38mm) NPTF Male x ¾" JIC Male Adaptor
3	MT29014N	1½" (38mm) NPT Forged Hex Nipple 3000lb
4	MT30002N	1½" (38mm) NPT Pot Coupling for Elcometer ABM

elcoTOUGH™

Elcometer elcoTOUGH™ Rubber Valve Liner

The elcoTOUGH™ liners last more than 3 times longer and can be quickly replaced without removing the valve from the machine.

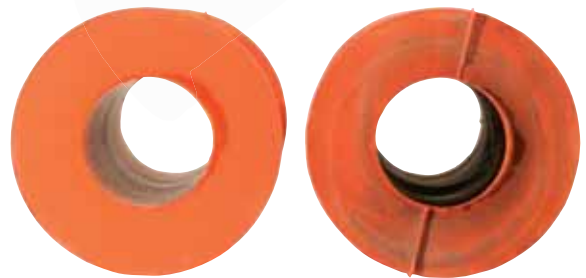
Made from tough, abrasion resistant natural rubber

Ideal for metering all types of abrasive materials

The elcoTOUGH™ rubber liner can be quickly replaced without disconnecting the valve



elcoTOUGH™ Long Life Liner



New elcoTOUGH™ Valve Liner

elcoTOUGH™ Valve Liner after 1665 Hours with Copper Slag at 116psi (8bar)

Part Numbers

Part Number	Description
Standard Valve Liner	
GV-LINER1	1" (25mm) GV & AGV elcoTOUGH™ Rubber Valve Liner (x1)
GV-LINER5	1" (25mm) GV & AGV elcoTOUGH™ Rubber Valve Liner (x5)
GV-LINER20	1" (25mm) GV & AGV elcoTOUGH™ Rubber Valve Liner (x20)
Mini Valve Liner	
MGV-LINER1	½" (13mm) MGV elcoTOUGH™ Rubber Valve Liner (x1)
MGV-LINER5	½" (13mm) MGV elcoTOUGH™ Rubber Valve Liner (x5)
MGV-LINER20	½" (13mm) MGV elcoTOUGH™ Rubber Valve Liner (x20)

Mini Flanged T

The Elcometer Mini Flanged T connects to the base of the Elcometer Mini General Valve (MGV) used on the Elcometer 1020, allowing abrasive media to mix with the air from the pusher line.



Part Numbers	
Part Number	Description
MT29246N	½" (13mm) Flanged & Equal T Assembly for use with Elcometer MGV Mini General Valve

8 Hole Pot Flange

The Elcometer 8 Hole Pot Flange has 8 holes to ensure accurate orientation of the media valve without having to over tighten the flange into the pot coupling.



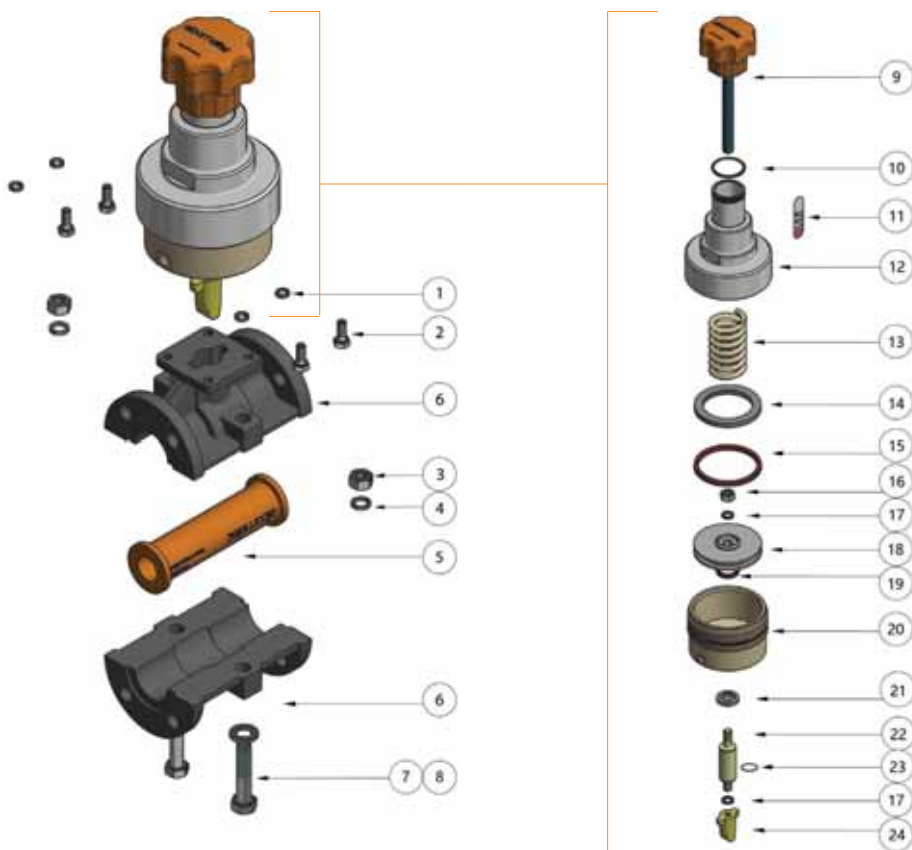
Part Numbers	
Part Number	Description
MT28536N	1¼" to ½" (32mm to 13mm) Reducing Nipple Flange Assembly for Elcometer 1020 for use with MGV Abrasive Valve
MT28552N	1¼" to 1" (32mm to 25mm) Reducing Nipple Flange Assembly for Elcometer Blast Machines using the GV or AGV Abrasive Valves
MT30021N	1¼" to ½" (32mm to 13mm) Reducing Hex Nipple
MT30530N	½" (13mm) Flange
MT30528N	1¼" to 1" (32mm to 25mm) Reducing Hex Nipple
MT29553N	1" (25mm) Flange

Elcometer AGV

Elcometer Automatic General Valve



Part Number	Description
AGV-N	Elcometer Automatic General Valve - NPT Thread



Spare Parts

Item	Part Number	Description	Item	Part Number	Description
1	KIT 1	M8 Steel Spring Washer (x4)	13	MT29996	Spring 2.2" (56mm) OD x 4.3" (110mm)
2	KIT 1	M8 x 20mm Hex Bolt Grade 4.6 (x4)	14	KIT 4	Actuator Stop Ring
3	KIT 2	M12 Zinc Plated Steel Nut (x2)	15	KIT 4	Piston Seal 101.6 OD 88.9 ID
4	KIT 2	M12 Steel Spring Washer (x2)	16	KIT 3	M12 Zinc Plated Steel Nut
5	GV-LINER1	Rubber Valve Liner	17	KIT 3	M12 Steel Spring Washer (x2)
6	MT29993	AGV Valve Housing Body	18	MT29997	Actuator Piston
7	KIT 2	M12 Zinc Plated Steel Washer (x2)	19	KIT 4	Piston Seal 350D 25 ID
8	KIT 2	M12 x 70 Zinc Plated Hex Bolt (x2)	20	MT29998	Actuator Cylinder
9	MT29994	AGV Valve Handwheel & Shaft	21	KIT 4	Rod Wiper Seal Ø1" (25mm) Shaft
10	KIT 4	O Ring 0.1" (3mm) Cord x 44.5 ID	22	MT29999	Plunger Shaft
11	KIT 4	Valve Indicator Label	23	KIT 4	O Ring BS4518 0116-24
12	MT29995	Actuator Spring Housing	24	MT30001	Valve Plunger

Service Kits

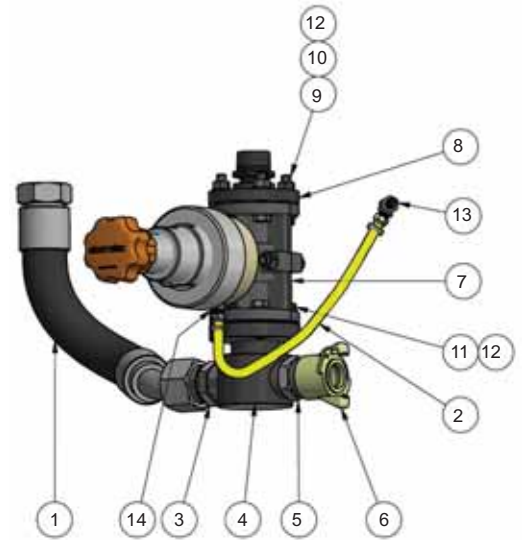
Part Number	Description
MT30044	AGV Service Kit 1 (contains items 1 & 2)
MT30045N	AGV Service Kit 2 (contains items 3, 4, 7 & 8)
MT30047	AGV Service Kit 3 (contains items 16 & 17)
MT29598	AGV Service Kit 4 (contains items 10, 11, 14, 15, 19, 21 & 23)

Elcometer Automatic General Valve Assembly

Elcometer AGV

Technical Specification

Operating Temperature	32° to 140°F (0° to 60°C)
Max Working Pressure (WP)	217psi (15bar)



Part Numbers

Part Number	Description
MT30065-1N	Elcometer 1440 Full AGV Assembly complete with Pusher Line, Mixer T, AGV Automatic General Valve, Pot Flange, Pot Coupling & Airline Assembly
MT30065-2N	Elcometer 1460 Full AGV Assembly complete with Pusher Line, Mixer T, AGV Automatic General Valve, Pot Flange, Pot Coupling & Airline Assembly
MT30065-3N	Elcometer 20100 Full AGV Assembly complete with Pusher Line, Mixer T, AGV Automatic General Valve, Pot Flange, Pot Coupling & Airline Assembly
MT30065-4N	Elcometer 24200 Full AGV Assembly complete with Pusher Line, Mixer T, AGV Automatic General Valve, Pot Flange, Pot Coupling & Airline Assembly
MT30065-5N	Elcometer 24285 Full AGV Assembly complete with Pusher Line, Mixer T, AGV Automatic General Valve, Pot Flange, Pot Coupling & Airline Assembly

Spare Parts

Item	Description	Part Numbers				
		Model 1440	Model 1460	Model 20100	Model 24200	Model 24285
1	1½" 15bar Pusher Line Assembly complete with JIC Swaged Hose	MT28609-1N	MT28609-3N	MT28609-5N	MT28609-6N	MT28609-6N
2	Elcometer Airline Assembly	MT29580-2N	MT29580-3N	MT29580-4N	MT29580-5N	MT29580-6N
3	1½" (19mm) NPTF Male x ⅞" JIC Male Adaptor			MT29710N		
4	1½" Mixer T			MT28553N		
5	1½" Forged Hex Nipple 3000lb			MT29014N		
6	1½" Claw Coupling			MT30002N		
7	AGV Main Assembly			AGV-N		
8	1¼" to 1" Reducing Nipple Flange Assembly			MT28552N		
9	½" (M12 x 50) Zinc Plated Hex Bolt (x4)			KIT 5		
10	½" (M12) Zinc Plated Steel Nut (x4)			KIT 5		
11	½" (M12 x 40) Zinc Plated Hex Bolt (x4)			KIT 5		
12	½" (M12) Zinc Plated Steel Washer Grade A (x12)			KIT 5		
13	¼" Male Female JIC T Adaptor			MT30089N		
14	¼" JIC X Adaptor			MT30086N		
	AGV Service Kit 5 (contains items 9, 10, 11 & 12)			MT30048N		