

User Guide

Moisture Separator - ASME



⚠ WARNING

Before carrying out any replacement or maintenance of any part of the Abrasive Blast Machine (ABM) or any item within the Abrasive Blast System, please read and understand the User Guide for the Abrasive Blast Machine.

Failure to follow operating instructions could result in death, serious injury or damage to equipment.

CONTENTS

Section	Page
1 Removing & Replacing the Filter Element	en-2
2 Drawings & Parts List	en-3

For the avoidance of doubt, please refer to the original English language version of this user guide. The most recent version is available to download via the blasting section of the Elcometer website, www.elcometer.com/blasting.

Please ensure that all product packaging is disposed of in an environmentally sensitive manner. Consult your local Environmental Authority for further guidance.

elcometer® is a registered trademark of Elcometer Limited, Edge Lane, Manchester, M43 6BU.
United Kingdom

All other trademarks acknowledged.

© Elcometer Limited 2019-2020. All rights reserved. No part of this document may be reproduced, transmitted, transcribed, stored (in a retrieval system or otherwise) or translated into any language, in any form or by any means (electronic, mechanical, magnetic, optical, manual or otherwise) without the prior written permission of Elcometer Limited.

1 REMOVING & REPLACING THE FILTER ELEMENT



Before carrying out any replacement or maintenance of any part of the Abrasive Blast Machine (ABM) or any item within the Abrasive Blast System, please read and understand the User Guide for the Abrasive Blast Machine.



Depressurise the ABM, bleed all the air supply lines to the ABM and disconnect the ABM from the compressor. Failure to do so could cause serious injury or death.

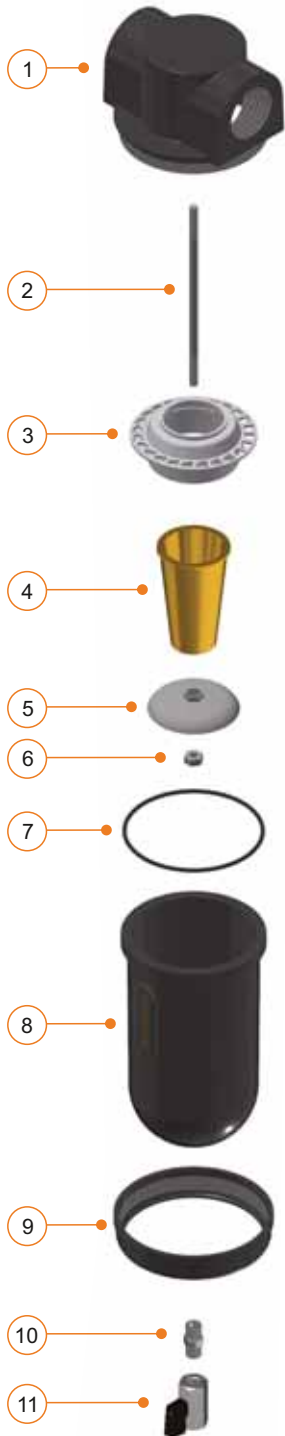
Please refer to the drawing in Section 2.

- 1 Ensure that the abrasive blast machine is depressurised and disconnected from the compressor and the drain valve (item 11 is open.
- 2 Taking care not to damage the integrated o-ring seal (item 7) at the base of the moisture separator top thread, carefully unscrew the moisture separator bowl holding ring (item 9) - using a rubber filter strap wrench (part number MT30276) if required - and set the bowl and collar down on a clean surface making sure not to damage the drain valve.
- 3 Holding the filter element (item 4) in place, carefully unscrew and remove the lower nut (item 6) followed by the plastic dome (item 5) and set down on a clean surface. The filter element and top plastic air deflector (item 3) will now both freely slide off the threaded steel bar (item 2).
- 4 Clean the filter element and top plastic air deflector with detergent and water and blow dry. Solvents may damage the filter element and should not be used. If the filter element is damaged, it should be replaced.
- 5 Inspect the integrated o-ring seal (item 7) and replace if required.
- 6 Re-build the moisture separator, taking care to fit the items in the correct orientation:
 - **Top Plastic Air Deflector:** ribs pointing down the threaded steel bar.
 - **Filter Element:** cone downwards - wide diameter at top
 - **Plastic Dome:** Convex surface towards filter element, do not over tighten the dome, it will damage the plastic thread.

Note: Do not over tighten the lower nut as it will damage or break the plastic dome.

2 DRAWINGS & PARTS

Part Number	Description
MT28617N	Moisture Separator Assembly



Item	Part Number	Description
1	MT30031N	Top Manifold
2	MT30032	Threaded Steel Bar
3	MT30033	Air Deflector
4	MT29435	Filter Element
5	MT30034	Plastic Dome
6	MT30035	Nut
7	MT29436	O-Ring
8	MT30036N	Vessel
9	MT30037	Holding Ring
10	MT30085N	1/4" Male Adaptor
11	MT28619N	1/4" Ball Valve (Black Handle)
-	MT30276	Strap Wrench Kit, 4" and 6" Diameter For disassembling the Moisture Separator to replace the filter element

